

i4.0 Total Solutions Provider

Standard Product Catalogue



United BC Team Sdn Bhd

Unlock Automation Without Upfront Commitment

<https://ubsmartsolutions.com/>



Product List

01 RFID Series

StowSMART RFID Cabinet

02 Automated Warehouse

UMR 1000

UMF 1000

UMR 600

UMF 500

UMR 300

03 ASRS

Bin Container ASRS

04 Digitalisation

Smart Station Module



StowSMART RFID Cabinet

Suitable for

- Production tools
- Libraries
- Office assets
- Supply rooms
- Medical industry

Product Function

Streamline inventory management with RFID technology for real-time material scanning with multi-antenna coverage.

Supports automatic item collection and return for efficient storage, retrieval and inventory control.

Optimizes traceability and enables seamless, automated workflows.

Product Specifications

StowSMART RFID Cabinet

Product Model	CA-M
Operating System	Windows (optional Android)
RF Protocol Standards	ISO 18000 - 6C(EPC C1 G2)
Read Time	5 - 15 seconds
Fixed Mobile Mode	Bottom Footlet/Casters
Frequency Range	919 Mhz to 923 Mhz (Flexi to adjust by end user)
Capacity	5 Layers
Lighting in the Cabinet	Light Source: Cool White
Power Supply Input	AC176V to 264V
Power Consumption	<150W
Operating Humidity	10% RH ~ 90% RH
Operating Environment	0~60 °C
Industrial Control Configuration	15,4GRAM, 128G SSD (RK3399, 4G+16G)
Identification Method	Radio Frequency Identification (UHF RFID)
Material	1.2mm thick carbon steel plate
Dimensions (HWD)	2029mm (H)* 1100mm (W)* 554mm(D)
Screen	14-inch capacitive touch screen with a resolution of 1920x1680 and a screen ratio of 16:9
High-Frequency Card Swiping	Standard Configuration: <input checked="" type="checkbox"/> Optional
Fingerprint	Standard Configuration: <input checked="" type="checkbox"/> Optional
Security Camera	Standard Configuration: <input checked="" type="checkbox"/> Optional
Face Recognition	Standard Configuration: <input checked="" type="checkbox"/> Optional
WIFI	Standard

UMR 1000



Suitable for

- Warehouse automation
- Manufacturing line support
- Inventory management

Product Function

Transfers rackings/containers from Point A to Point B with autonomous material handling and seamless path planning to boost operational efficiency.

Automates the movement of goods within or between facilities, improving final-stage logistics efficiency.

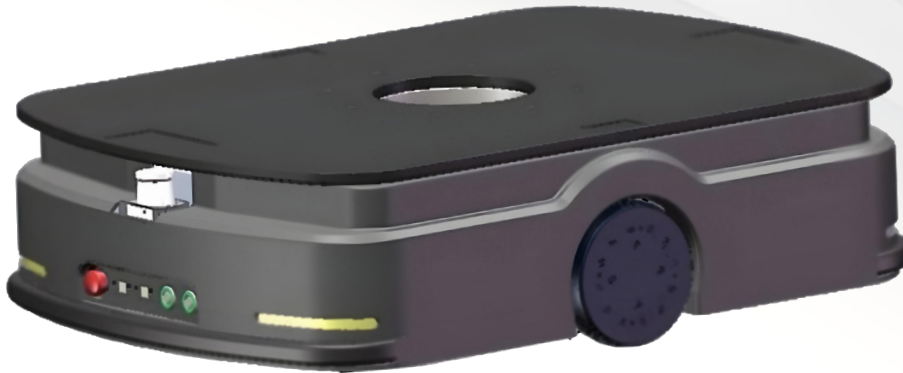
Performs real-time stock checks and auto-replenishes inventory alerts.

Product Specifications

UMR 1000

Product Model	UMR 1000
Endurance (h)	5
Lifting Height	Max: 50mm
Weight (kg)	-
Charging Time (h)	(0% - 80%) 2
Rated Load (kg)	600kg or 1000kg
Navigation	LiDAR SLAM
Charging Mode	Automatic charging & Manual
Ground Clearance	Slope < 3%
Communication Module	Build in MOXA AWK - 1137c
Nominal Voltage / Capacity	48V /27Ah
Lifting Pad Size (mm)	850mm(L) * 600mm(W)
Rated Speed	0.8 m/s
Wired Network	RJ45 Interface
Drive Type	Two - wheel differential
WiFi Roaming Function	Available
Position Accuracy (mm)	± 10mm
Laser Obstacle Detection	Available (Front & Back Only)
Emergency Stop Button	Available
Sound - Light Alarm	Available
Bumper Strip	Contact anti-collision strip (Front & Back Only)
Dimension (LWH)	954mm (L)* 650mm (W)* 250mm(H)
Rotation Diameter (Applicable When SENSOR OFF ONLY)	587mm

UMR 600



Suitable for

- Warehouse automation
- Manufacturing line support
- Inventory management

Product Function

Transfers rackings/containers from Point A to Point B with autonomous material handling and seamless path planning to boost operational efficiency.

Automates the movement of goods within facilities or between buildings, improving final-stage logistics efficiency.

Perform real-time stock monitoring and automated inventory replenishment.

Product Specifications

UMR 600

Product Model	UMR 600
Chassis Ground Clearance	25mm
Drive Mode	Double wheel differential
Passability (Slope/ Step/ Gap) [2]	≤5%/5mm/30mm
Battery Capacity	48V/24AH Lithium iron phosphate
Lifting Time	8 ± 0.5s
Navigation Position Accuracy [3]	±5mm
Combined Endurance Time	8h
Maximum Lifting Height	60 ± 2mm
Navigation Angle Accuracy [3]	±1°
Charging Time(10-80%)	≤1.5-2h
Maximum Payload	600kg
Navigation Mode	LiDAR SLAM
Charging Mode	Automatic
IP Rating [1]	IP20
Operation Speed (No-load/Full load)	2m/s; 1.5 m/s
Cycle Times	1500 cycles, capacity >80%
Network	Ethernet / Wi-Fi 802.11 a/b/g/n/ac
Ambient Temperature And Humidity Range	Temperature : 0~50℃ Humidity: 10~90%, No compression condensation
LiDAR SLAM Number	2

Product Specifications

UMR 600

Basic Functions [4]	✓
Bumper Strip	✓
Follow-up Function	✓
Emergency Stop Button	✓
Wi-Fi Roaming	✓
Speaker	✓
Automatic Charging	✓
Ambient Light	✓
Shelf Recognition Function	✓
Dimension (LWH)	954mm (L)* 650mm (W)* 250mm(H) (without bumper strip)
QR Code Accurate Positioning Function	Optional

UMR 300



Suitable for

- Warehouse automation
- Manufacturing line support
- Inventory management

Product Function

Transfers rackings/containers from Point A to Point B with autonomous material handling and seamless path planning to boost operational efficiency.

Automates the movement of goods within or between facilities, boosting final-stage logistics efficiency.

Perform real-time stock checks and automated inventory replenishment.

Product Specifications

UMR 300

Product Model	UMR 300
Chassis Ground Clearance	25mm
Drive Mode	Double wheel differential
Passability (Slope/ Step/ Gap) [2]	≤5%/5mm/30mm
Battery Capacity	48V/24AH Lithium iron phosphate
Lifting Time	5 ± 0.5s
Navigation Position Accuracy [3]	±10mm
Comprehensive battery life	8h
Maximum Lifting Height	60 ± 2mm
Navigation Angle Accuracy [3]	±1°
Charging Time(10-80%)	≤1-2h
Maximum Payload	300kg
Navigation Mode	LiDAR SLAM
Charging Mode	Automatic charging and Manual
IP Rating [1]	IP20
Operation Speed (No-load/Full load)	1.5m/s; 0.8m/s
Cycle Times	1500 cycles, capacity >80%
Network	Ethernet / Wi-Fi 802.11 a/b/g/n/ac
Ambient Temperature And Humidity Range	Temperature : 0~50℃ Humidity: 10~90%, No compression condensation
LiDAR SLAM Number	1 (or 2 optional)

Product Specifications

UMR 300

Basic Functions [4]	✓
Bumper Strip	✓
Emergency Stop Button	✓
Wi-Fi Roaming	✓
Speaker	✓
Automatic Charging	✓
Ambient Light	✓
Shelf Recognition Function	✓
Dimension (LWH)	954mm (L)* 650mm (W)* 250mm(H) (without bumper strip)
QR Code Accurate Positioning Function	Optional



UMF 1000

Suitable for

- Smart warehouses
- Manufacturing plants
- Distribution centers
- Logistics facilities

Product Function

Enables pallet transfer from Point A to Point B with autonomous material handling and seamless path planning to enhance operational efficiency.

Reduces labor dependency while enhancing productivity and safety.

Product Specifications

UMF 1000

Product Model	UMF 1000
Machine Weight (Include Battery)	680kg
Rated Load (kg) - At Ground Level	1000kg
Forklifting Height	1600mm
Dimension (LWH)	1640mm (L)* 990mm (W)* 2040mm(H)
Outer Fork Width (b5)	560mm or 680mm
Min Channel Width	1885mm
Europe CE Certification	Non - CE
Communication Module	Build in MOXA AWK - 1137c
Wired Network	RJ45 Interface
WiFi Roaming Function	Available
Endurance (h)	7
Charging Time (h)	(0% - 80%) 2
Charging Mode	Automatic charging and Manual
Nominal Voltage / Capacity	24V 180Ah
Rated Speed	0.8 m/s
Cleanroom Performance	Class 1000
Laser Obstacle Detection	Available (Front Only)
Fork Dimension (S/E/L) S: Fork Thickness E: Fork Width L: Fork Length	55mm (S)* 180mm (E)* 1150mm(L)

Product Specifications

UMF 1000

Sound - Light Alarm	Available
Drive Type	Differential Drive
Position Accuracy (mm)	± 10mm
Gradient Ability	Slope < 3%
Emergency Stop Button	Available
Bumper Strip	Contact anti-collision strip (Front Only)
Turning Radius (Wa) (Applicable When SENSOR OFF ONLY)	1130mm



UMF 500

Suitable for

- Smart warehouses
- Manufacturing plants
- Distribution centers
- Logistics facilities

Product Function

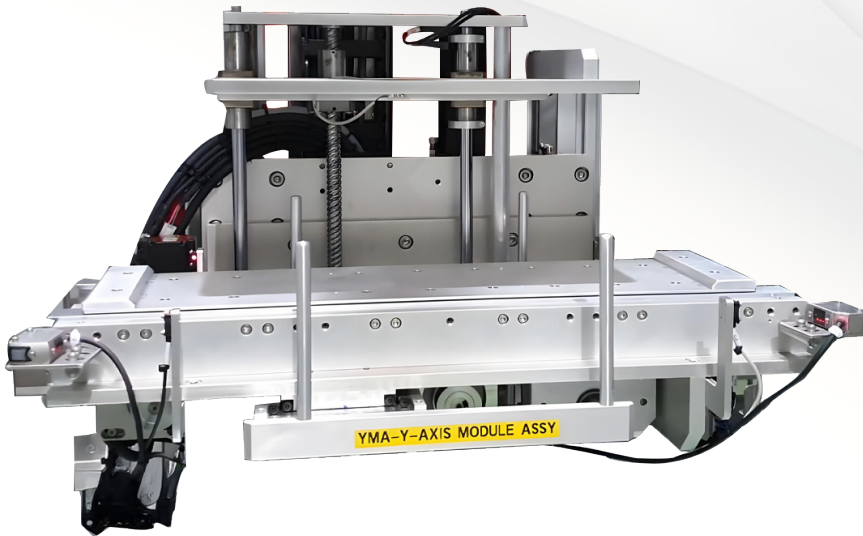
Enables pallet transfer from Point A to Point B with autonomous material handling and seamless path planning to enhance operational efficiency.

Product Specifications

UMF 500

Product Model	UMF 500
Communication Module	Build in MOXA AWK - 1137C
Wired Network	RJ45 Interface x 1
WiFi Roaming Function	Support
Driving Form	Differential / wheel
Wheel Base	877mm
Axle Load With Load, Drive / Load Side	730kg / 1350kg
Pallet Identification Function	Optional
3D Obstacle Avoidance Function	Optional
Load Centre Distance	600mm

Bin Container ASRS



Suitable for

- Spare parts & component storage
- Electronic and high-tech
- Materials automotive assembly lines
- Pharmacy & healthcare inventory

Product Function

Minimizes human error and enhances accuracy with automated scanning, weighing, and material handling.

Ensures real-time inventory visibility, usage tracking, and waste reduction with full traceability.

Supports FIFO (First-In-First-Out) and integration with ERP/WMS systems for seamless operations.

Streamlines storing and retrieving of materials for operation efficiency.



Smart Station Module

Suitable for

- Assembly lines

Product Function

Digitize and standardize work processes with step-by-step digital instructions to minimize errors and boost consistency.

Enhances quality control with real-time vision checking, anomaly detection, and automated alerts.

Tracks production output, task completion, and operator performance through an interactive dashboard.

Reduces training time and increases operator efficiency with guided workflows and no-code configurability.

Product Specifications

Smart Station

Product Model	Smart Station
Workstation Hardware	<ul style="list-style-type: none">- Stainless Steel Table (1200mm x 2000mm x 800mm)- Optional: Wheel Set, Door Hinges- ESD Mat (Green)
Mounting Accessories	<ul style="list-style-type: none">- Monitor Arm VESA 4 Table Top (27")- ULTI Vulcan Wall Mount Arm (Aluminium)
Electrical System	<ul style="list-style-type: none">- 6-Gang Power Extension- Power Socket 13A (Schneider, Universal)- Light Switch (Schneider)- Ventilation Fan- AC to DC Power Supply (24VDC, 30W)- Custom Electrical Panel- Main Power Switch (2P)- Terminal Block with Labels
Electrical Protection	<ul style="list-style-type: none">- ELCB 40A 2P, 30mA- MCB 6A/10A/16A- Emergency Stop Button
Main Control System	<ul style="list-style-type: none">- Embedded Fanless IPC- Tulip Edge IO
Monitor & Vision Systems	<ul style="list-style-type: none">- USB 27" Touch Screen Monitor- HDMI 27" Monitor (Optional)- Intel RealSense Depth Camera D435i- Logitech C922 Pro HD Webcam- Digital USB Microscope (250x)- LED Ring Light (6" for Inspection)- USB 3.0 Extension Cables + Custom Mounts
Pick-to-Light LED Kits	<ul style="list-style-type: none">- U-shaped LED Strip (1m)- Tulip Extension Kit (2 x 1m Light Strip)- 1M x 30LED Light Strip- 1M x 60LED Light Strip- 2M x 60LED Light Strip

Product Specifications

Smart Station

Other Accessories	<ul style="list-style-type: none">- Barcode Printer + Wireless Kit- Foot Pedal- Plastic Bin (Black/Dark Colour)- LED Workstation Light- Symcode MJ-4000 Barcode Scanner (1D/2D)- RYB Andon Light with Buzzer + Pole- Wireless Keyboard with Mouse Pad (USB)- TP-LINK 5-Port Gigabit Switch (Steel Case)
Login Module	RFID/Proximity Card Reader

THANK YOU!

We appreciate you exploring our catalog

At United BC Team Sdn Bhd, we're committed in delivering high-quality, innovative, and reliable solutions. We value your trust and and look forward in serving you. Let's build success together.

Contact Us



04-5899 686



sales-standardproduct@ubct.com.my



22-03 Tower B, Vertical Business Suite II,
Avenue 3 Bangsar South City, No. 8
Jalan Kerinchi, 59200 Kuala Lumpur, Malaysia